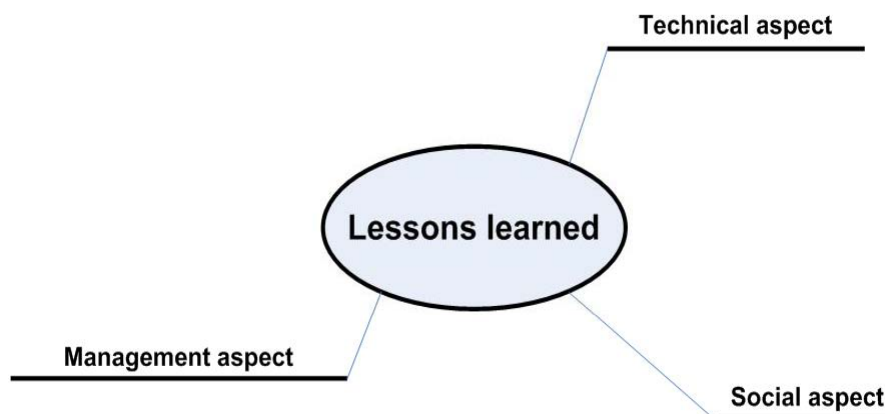
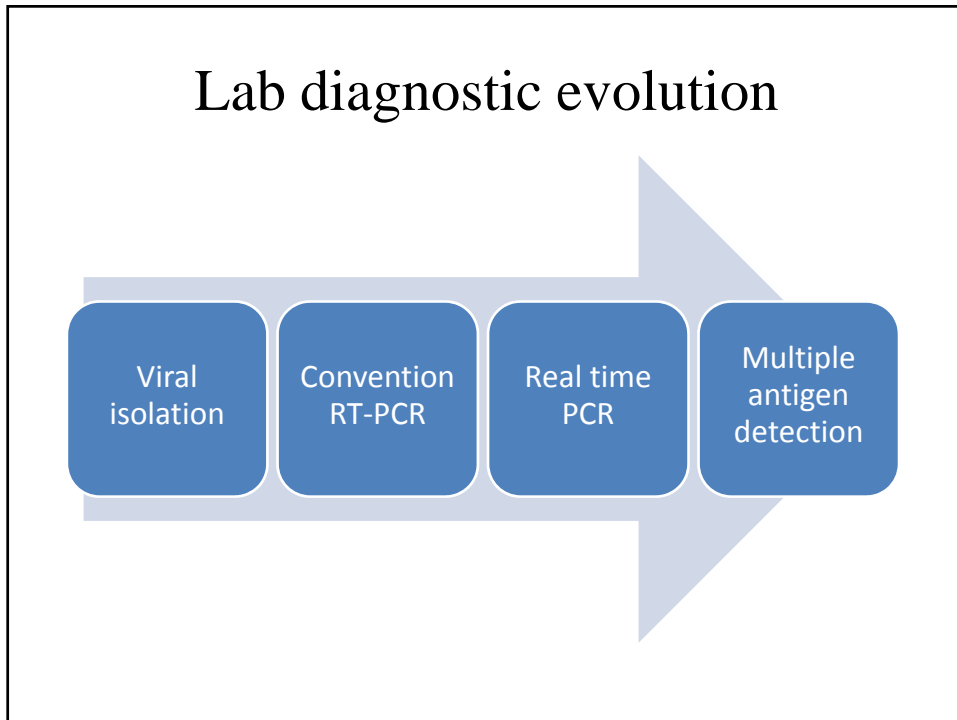
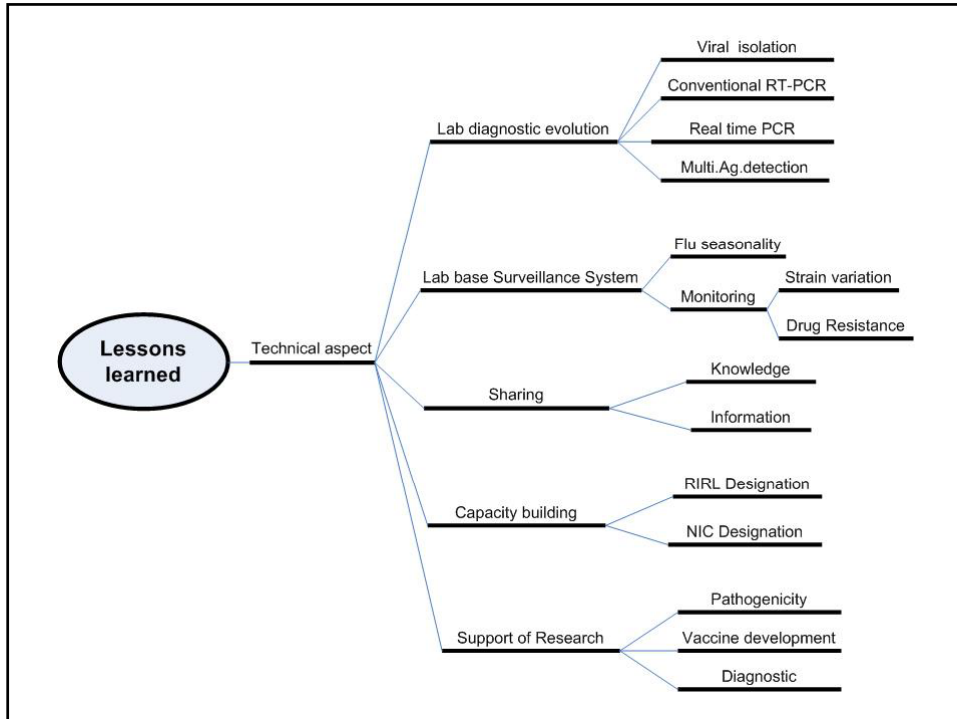


***Lessons Learned Phase I year
2004-2009 DMSc***

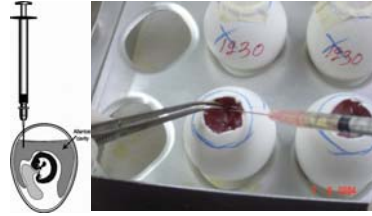
*Sirima Pattamadilok
National Institute of Health
Department of Medical Sciences
Present at
Sentinel Hospital Influenza
Surveillance Project Annual Meeting
Holiday INN, Chang Mai
October 26, 2010*

Lessons learned





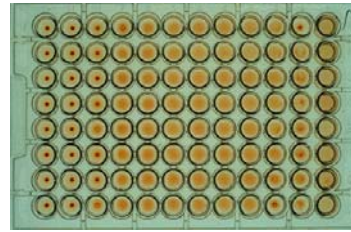
A/H5 isolation by egg inoculation



By amniotic & allantoic route



Egg incubation at 37°C



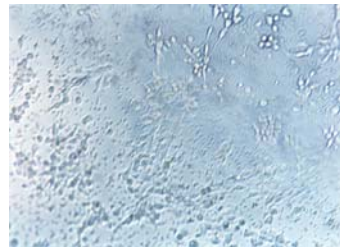
Strain analysis by HAI test

5

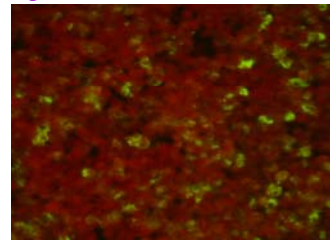
A/H5 isolation by cell culture



Inoculation using MDCK



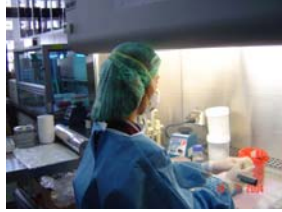
Observed CPE
under microscope



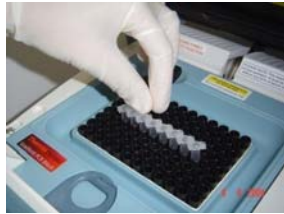
Identify type & subtype by IFA

6

Influenza gene detection by RT-PCR



Extraction RNA from respiratory secretion



Polymerase chain reaction using PCR thermocycler

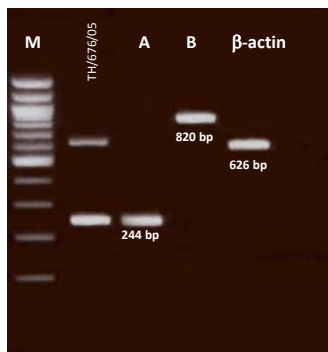


PCR product visualized by Gel-electrophoresis

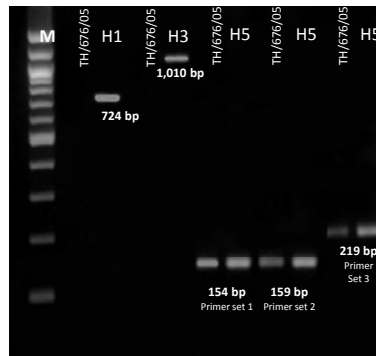
7

PCR product visualized in agarose gel by UV transilluminator

Screening test

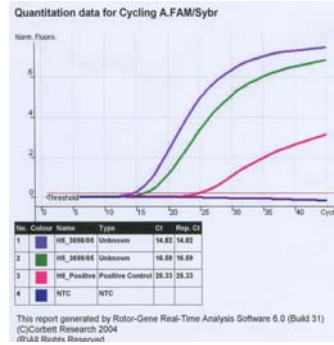


Subtype Identification



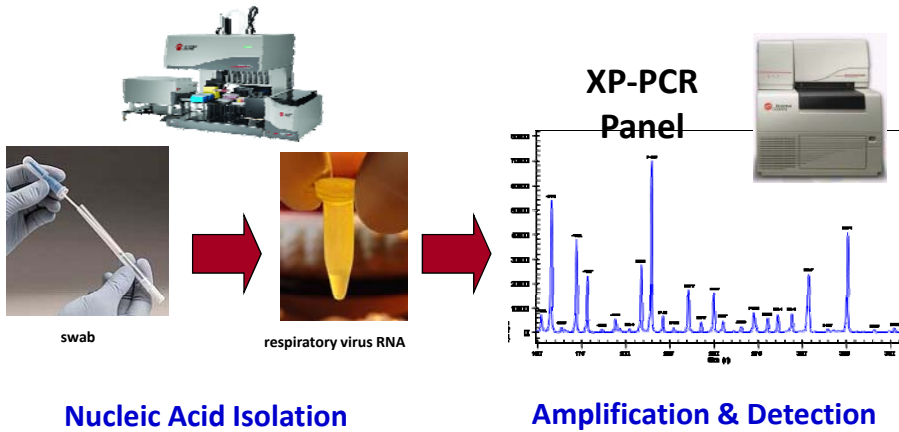
8

Typing and subtyping Influenza A by real time RT-PCR



9

Beckman Coulter Respiratory Virus Identification Solution



Thai NIH,2010

10

Facility in Mobile Lab, DMSc, Thailand

Real time RT-PCR



11

Strengthen DMSc Laboratory network

★ Regional medical science center (14 RMSc)

🚐 Mobile Laboratory (7 mobile labs)



DMSc

RMSc Chaing Mai

RMSc Chaing Rai

RMSc Pitsanulok

RMSc Udonrthani

RMSc Ubonrachathani

RMSc Khonkhen

RMSc Nakornrachasima

RMSc Nakornsawan

RMSc Chonburi

RMSc Samutsakorn

RMSc Trang

RMSc Suratthani

RMSc Songkhla

RMSc Phuket

K. supawat,Thai NIH



12

1. Thailand award for public service quality, 2007
 “Virological laboratory Testing Process for Suspected Avian influenza cases”

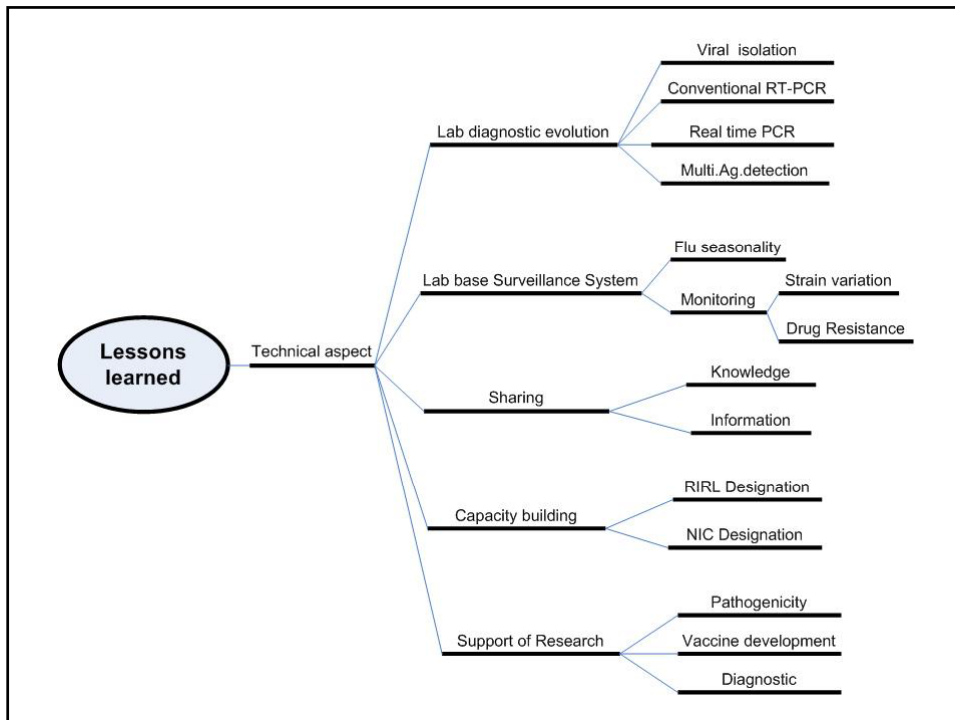
รางวัลคุณภาพการให้บริการประชาชน
 รางวัลดีเด่น ประเภทรายกระบวนการงาน
 กระบวนการงานการตรวจวิเคราะห์ทาง
 ห้องปฏิบัติการด้านไวรัสวิทยา กรณี
 ผู้ป่วย ต้องสงสัยด้วยไข้หวัดนก
 คณะกรรมการพัฒนาระบบราชการ (ก.พ.ร)
 พ.ศ. 2550

2. Submit for UN award, 2008

Thai National Infection Control Center
 Krongkaew NIH

13

Lab Based Surveillance System



Laboratory-based Influenza Surveillance network
Five years project partly supported by US-CDC
(Phase 1 : Sep 15, 2004-Sep 14, 2009)

•Virological surveillance

- Influenza like illness (ILI) outpatient
 - Geographically representative with 11 sites across country
 - Five ILI patients / week / site
 - Collect nasal and throat swab
 - Screening influenza cases using rapid test kit at sentinel site
 - Viral isolation at Thai NIH
 - Strain analysis and drug resistant testing at Thai NIH



K. supawat,Thai NIH



16

Sentinel sites

Phase I, First year

- ❖ Mae Sot hospital, Tak
- ❖ Nong Khai hospital
- ❖ Phra Pok Klao hospital, Chantaburi
- ❖ Hat Yai hospital, Songkhla
- ❖ Health Center 17, Bangkok

Second year

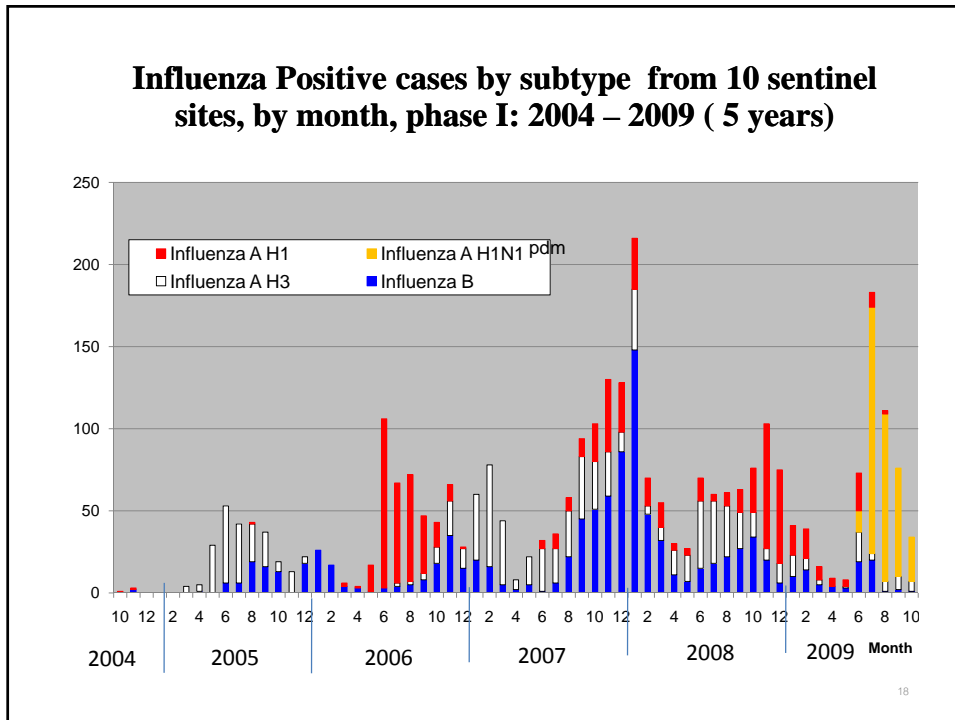
- ❖ Mae Chan hospital, Chiang Rai
- ❖ Chiang Saen hospital, Chiang Rai

Third year

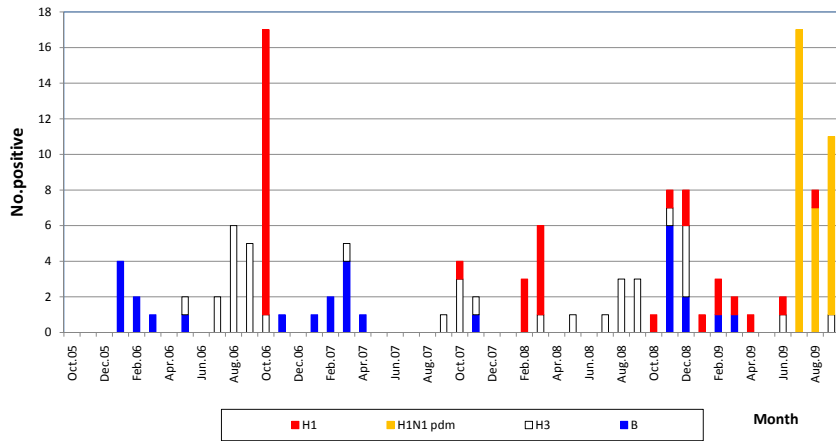
- ❖ Koh Chang hospital Trad
- ❖ Koh Samui hospital, Bangkok
- Hospital Samui, Surat Thani

Phase II, First year (Sep 2009 – Sep 2010)

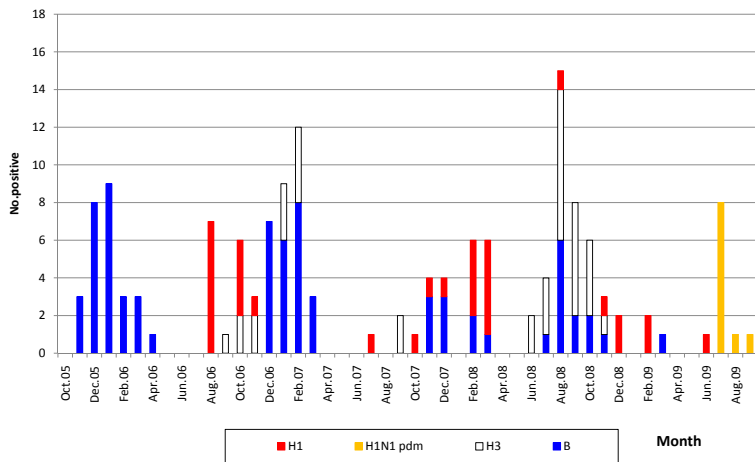
- ❖ Bamrasnaradura, Nonthaburi

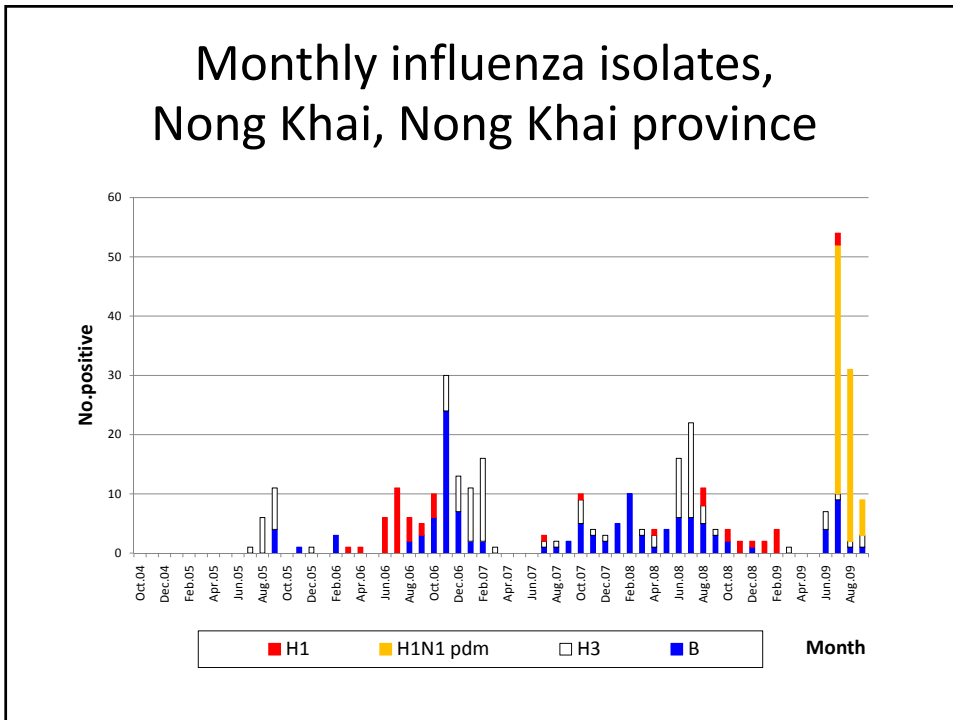
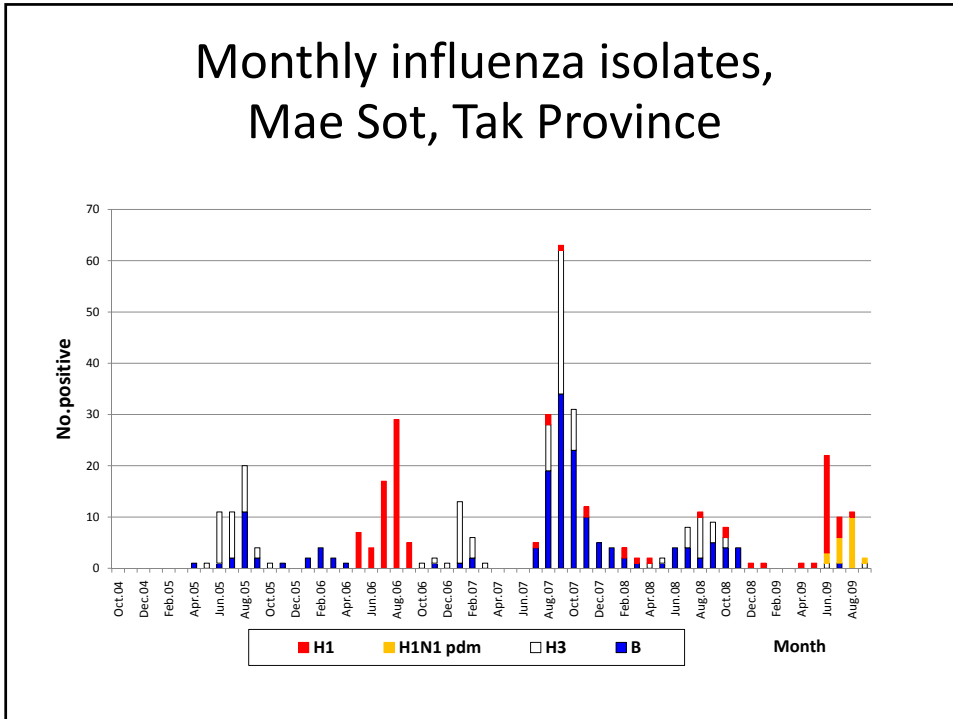


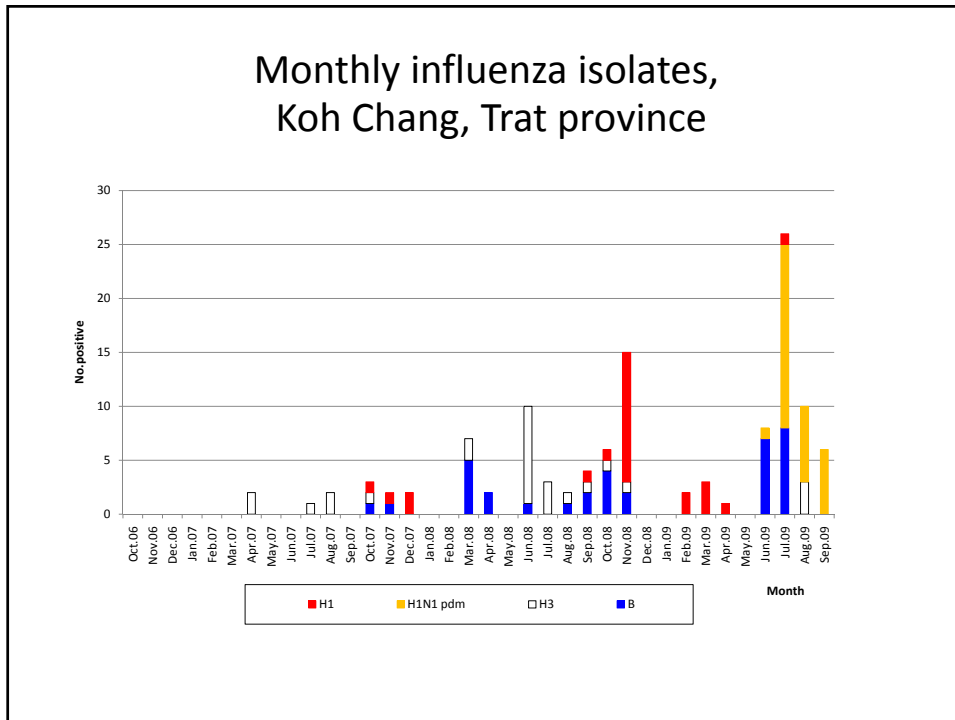
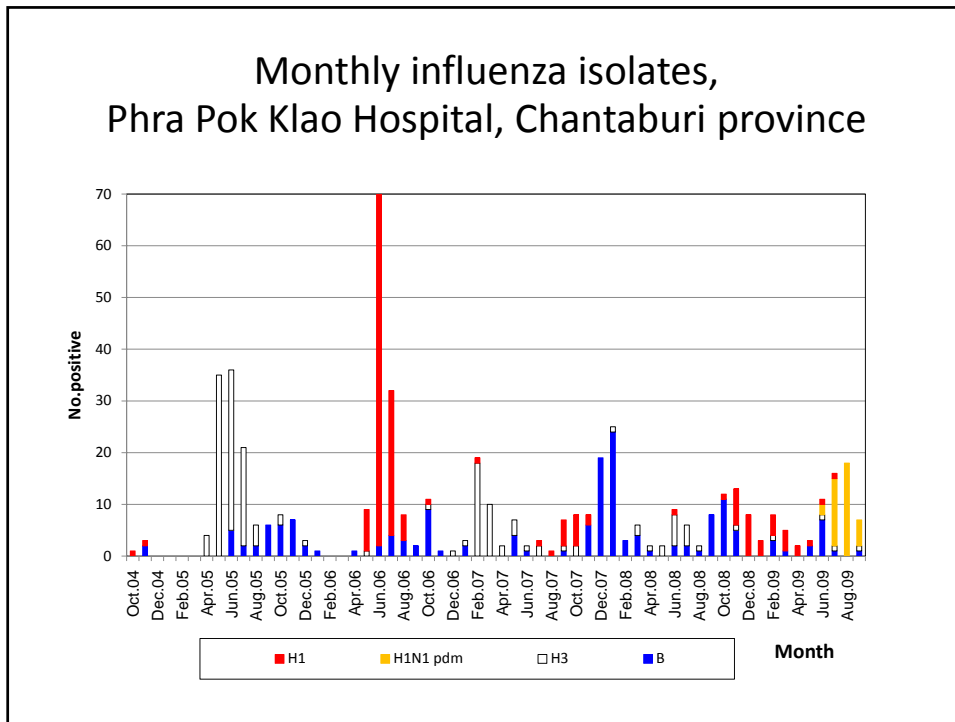
Monthly influenza isolates, Chiang Saen, Chiang Rai Province

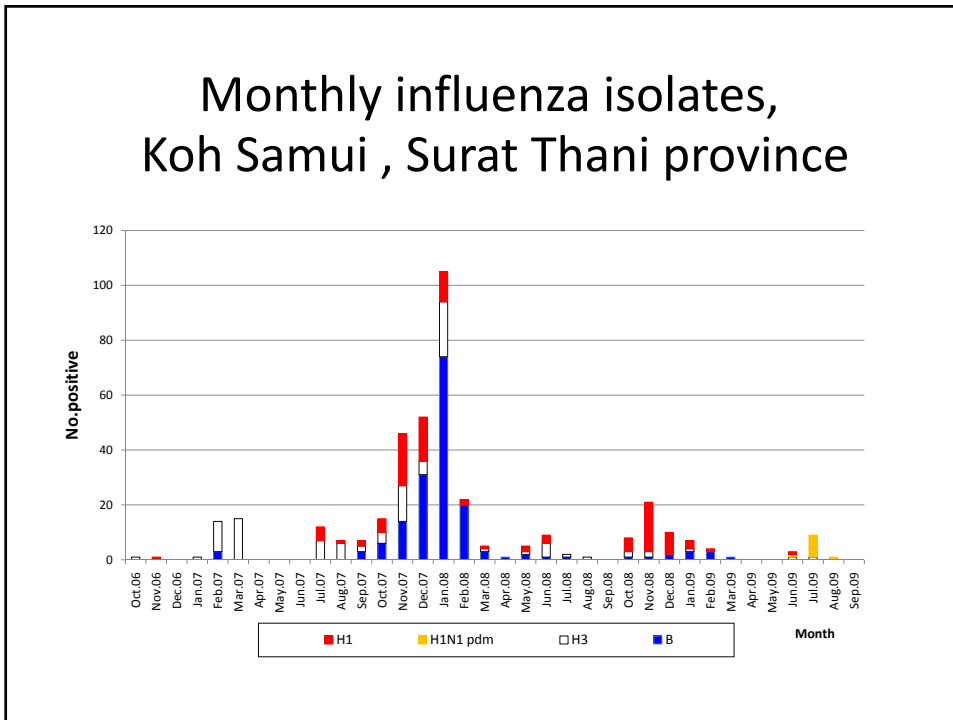
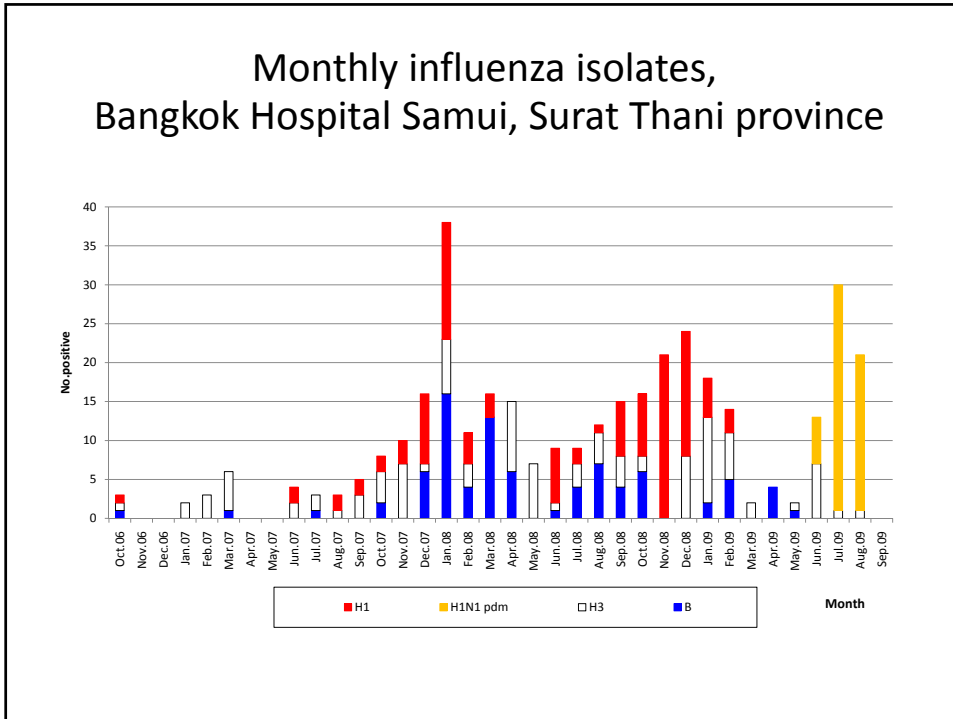


Monthly influenza isolates, Mae Chan, Chiang Rai Province

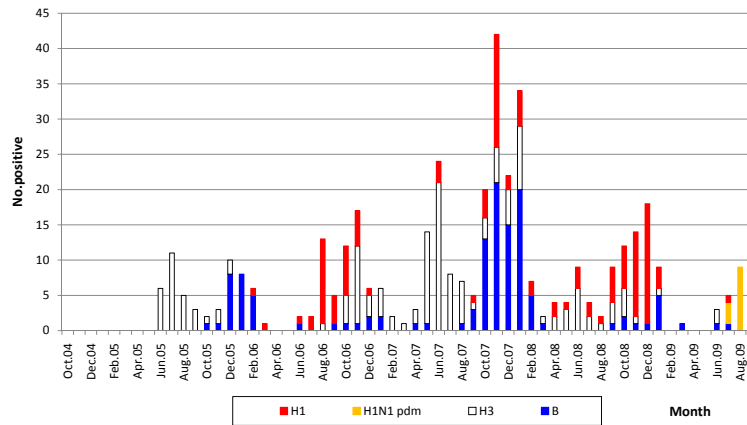




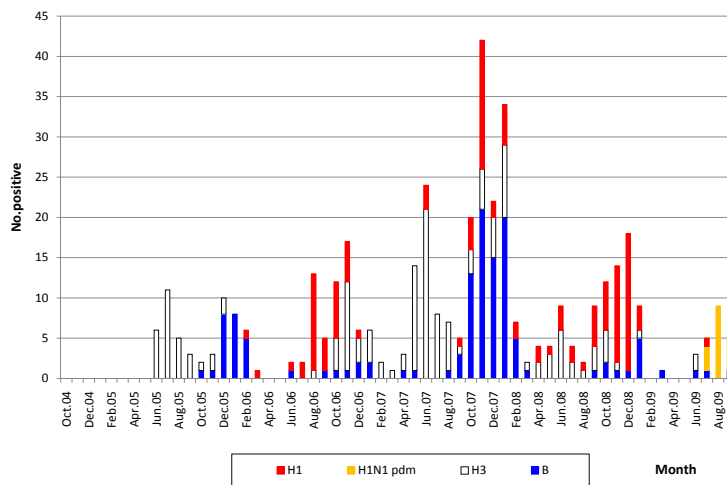


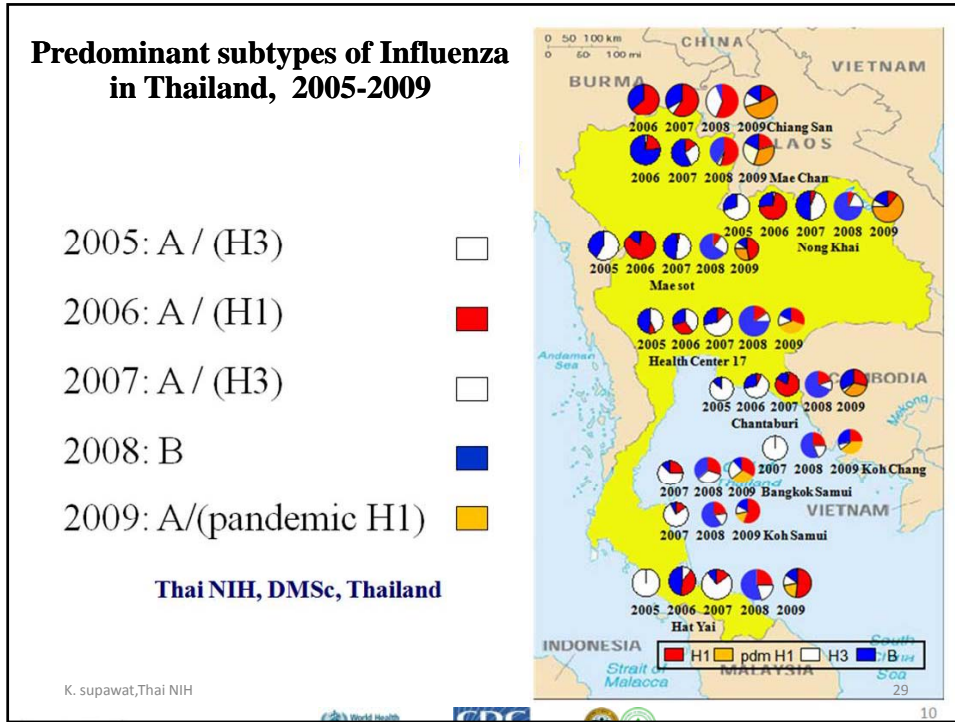


Monthly influenza isolates, Hat Yai , Songkhla province



Monthly influenza isolates, Health Center 17th , Bangkok province





Positive Specimens by subtype for Influenza virus Phase I : fiscal year 2004-2009 (5 year)

Year	No.test	No.pos.	Flu A (H1)	Flu A (H3)	Flu B
2005	1,478	282(19.1%)	9(0.6%)	197(13.3%)	76(5.1%)
2006	2,763	385(13.9%)	262(9.5%)	16(0.6%)	107(3.9%)
2007	2,800	369(13.2%)	42(1.5%)	210(7.5%)	117(4.2%)
2008	4,077	1,028(25.2)	208 (5.1)	287(7.0)	533(13.1)
2009	3,428	811(23.7)	553 (16.1)*	105(3.1)	153(4.5)
Total	14,546	2875(19.8%)	1074(7.4%)	815(5.6%)	986(6.8%)

2009 H1 = Seasonal

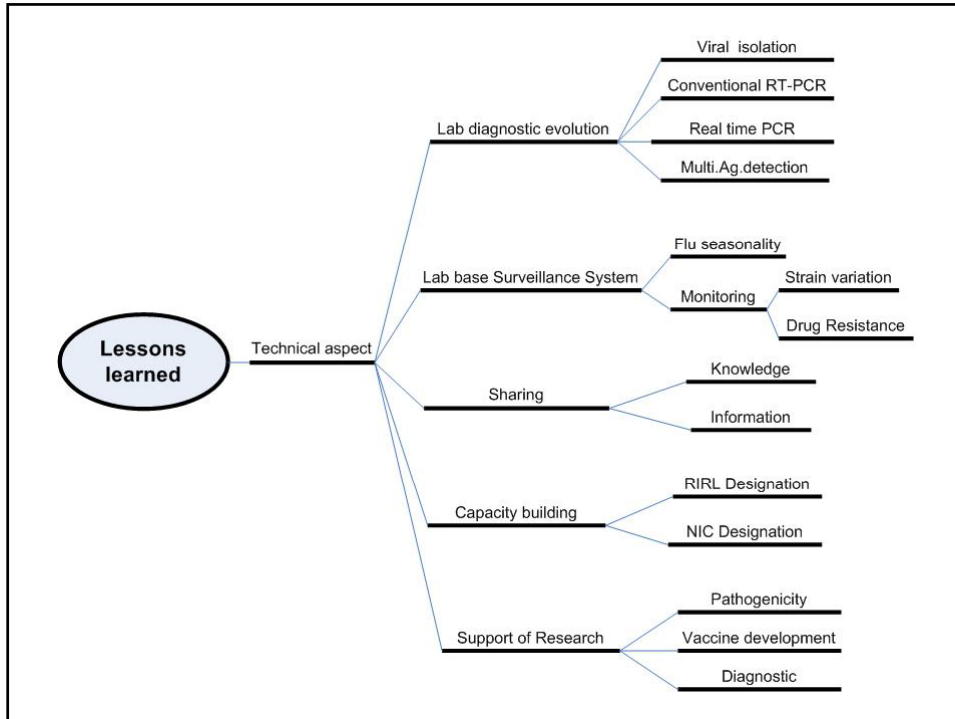

K. supawat, Thai NIH

**Proportion of positive Influenza cases by subtype
phase I: fiscal year 2004-2009 (5 Years)**

2005			2006			2007		
Influ. A		Influ. B	Influ. A		Influ. B	Influ. A		Influ. B
H1	H3		H1	H3		H1	H3	
3.2%	69.9%	27%	68.1%	4.2%	27.8%	11.4%	56.9%	31.7%
73.1%			72.3%			68.3%		

2008			2009		
Influ. A		Influ. B	Influ. A		Influ. B
H1	H3		H1	H3	
20.2%	27.9%	51.8%	65.7%	12.9%	18.9%
48.1%			78.7%		


Monitoring

Result of strain analysis: 2005-2007

	2004-2005		2005-2006		2006-2007	
H1N1	0.6%	A/New Caledonia/20/99	9.5%	A/New/Caledonia/20/99	1.5%	A/New Caledonia/20/99 A/Hawaii/15/2001 A/Solomon Island/03/2006
H3N2	13.3%	A/California/7/2004 A/Wellington/1/2004	0.6%	A/California/7/2004 A/Wisconsin/67/2005	7.5%	A/Wisconsin/67/2005 A/Brisbane/10/2007
B	5.1%	B/Hong/Kong/330/2001 B/Hawaii/33/2004 B/Shanghai/361/2002	3.9%	B/Hong/Kong/330/2001 B/Malaysia/2506/04 B/Shanghai/361/2002	4.2%	B/Malaysia/2506/2004 B/Ohio/1/2005 B/Shanghai/361/2002 B/Florida/4/2006
Neg.	80.9%		86.1%		86.8%	


S. Pattamadilok, ThaiNIH, DMSc 34



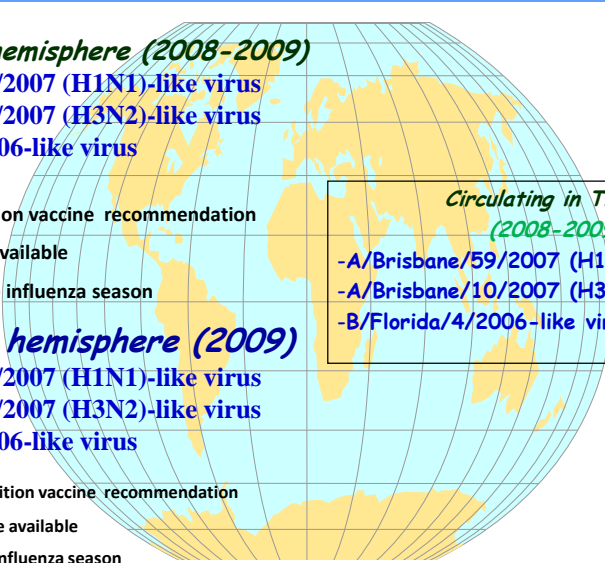
Result of strain analysis: 2007-2009

	2007-2008		2008-2009	
H1N1	5.1	A/Brisbane/59/2007 A/Solomon Island/3/2006	7.4	A/Brisbane/59/2007
H3N2	7.0	A/Brisbane/10/2007	3.1	A/Brisbane/10/2007
B	13.1	B/Florida/4/2006 B/Malaysia/2506/2004 B/Ohio/01/2005	4.5	B/Florida/4/2006
Neg.	74.8		76.3	

S. Pattamadilok, ThaiNIH, DMSc 35



WHO Influenza vaccine recommendation



Northern hemisphere (2008-2009)
A/Brisbane/59/2007 (H1N1)-like virus
A/Brisbane/10/2007 (H3N2)-like virus
B/Florida/4/2006-like virus

- Feb 07 :Composition vaccine recommendation
- Sep 07 :Vaccine available
- (Nov. 07 – Apr 08) influenza season

*Circulating in Thailand
(2008-2009)*

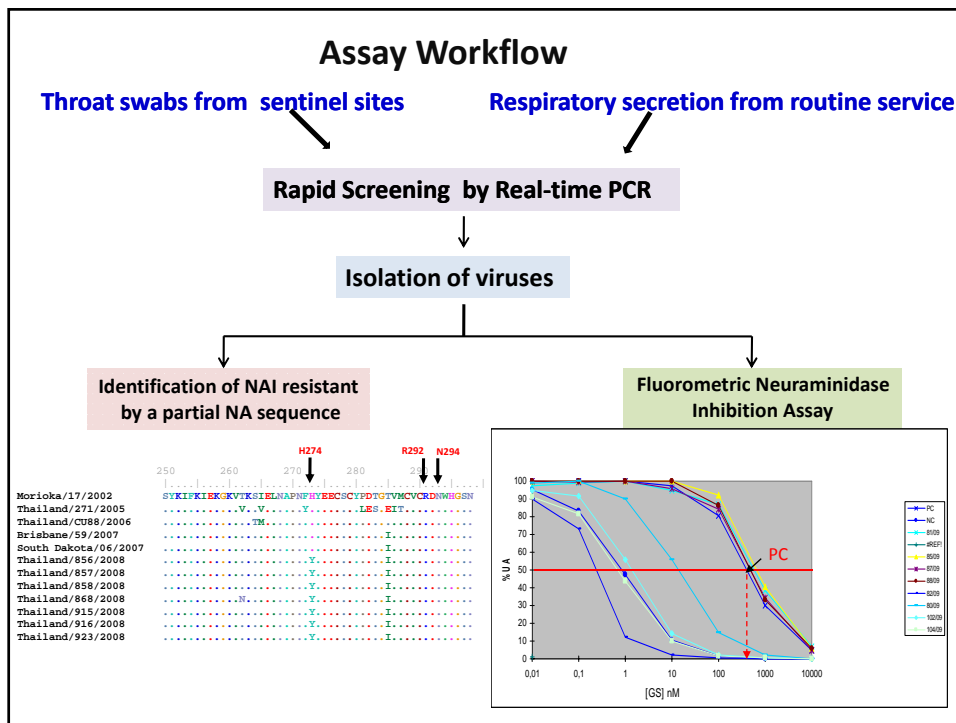
- A/Brisbane/59/2007 (H1N1)-like virus
- A/Brisbane/10/2007 (H3N2)-like virus
- B/Florida/4/2006-like virus

Southern hemisphere (2009)
A/Brisbane/59/2007 (H1N1)-like virus
A/Brisbane/10/2007 (H3N2)-like virus
B/Florida/4/2006-like virus

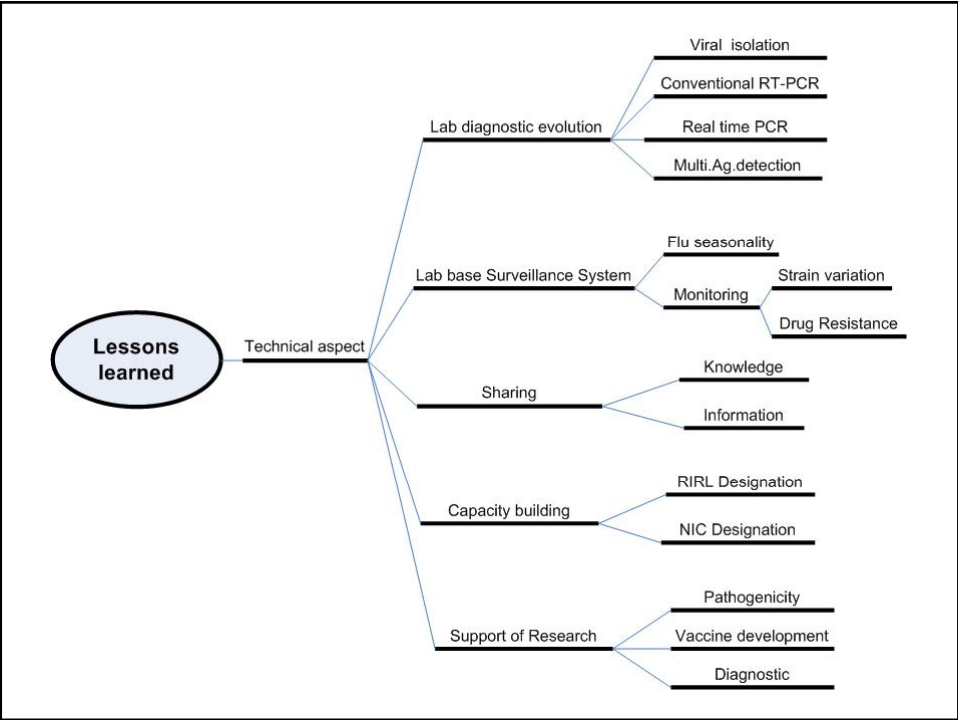
- Sep 07 :Composition vaccine recommendation
- May 08 :Vaccine available
- (May – Oct 08) influenza season

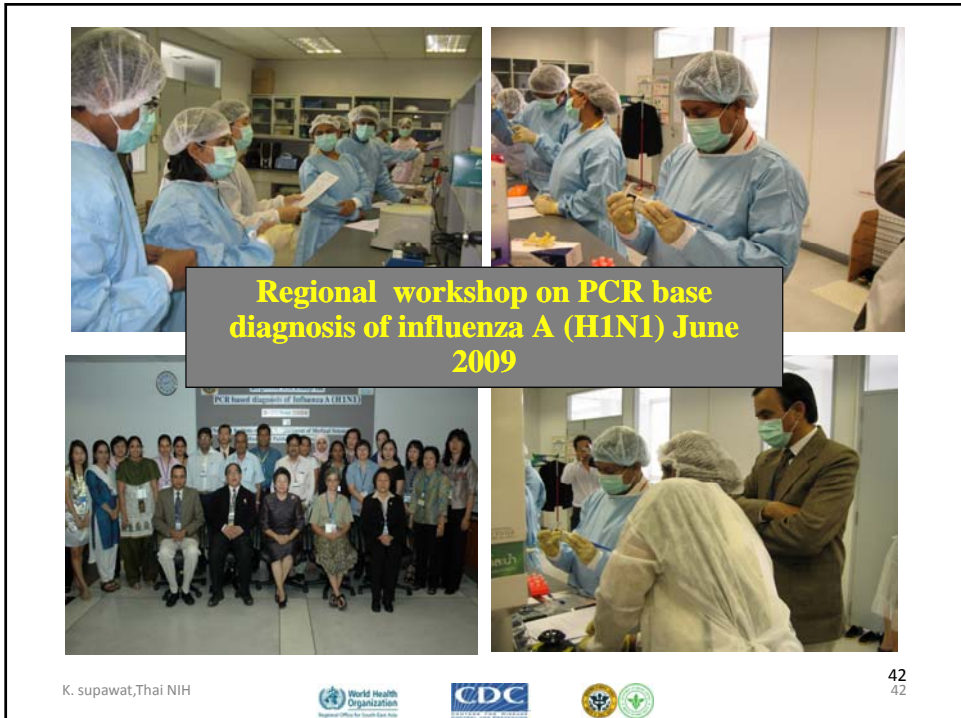
S. Pattamadilok, ThaiNIH, DMSc 36

Monitoring of drug resistant strain



Sharing





Training Workshop on Influenza Drug Resistance by Multiplex Realtime PCR For 14 RMSc 7-8 April 2010

World Health Organization
Regional Office for South-East Asia

43

Visit
Center for Laboratory and Epidemiology
Ministry of Health, Vientiane, Lao PDR

First time
27 Jun 06

Second time
24 Aug 07

44

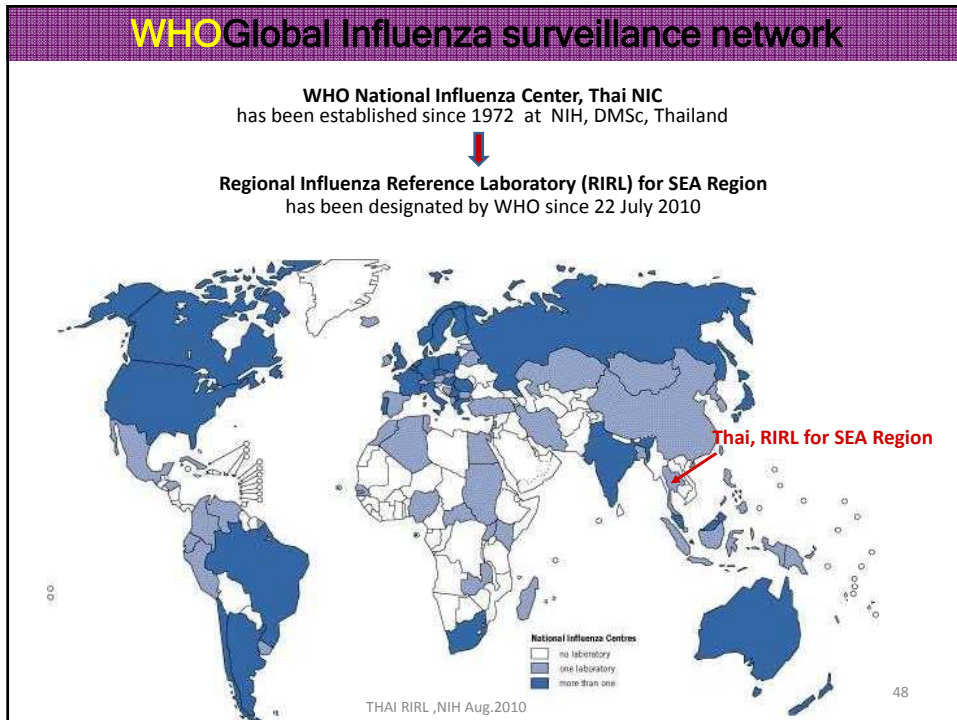
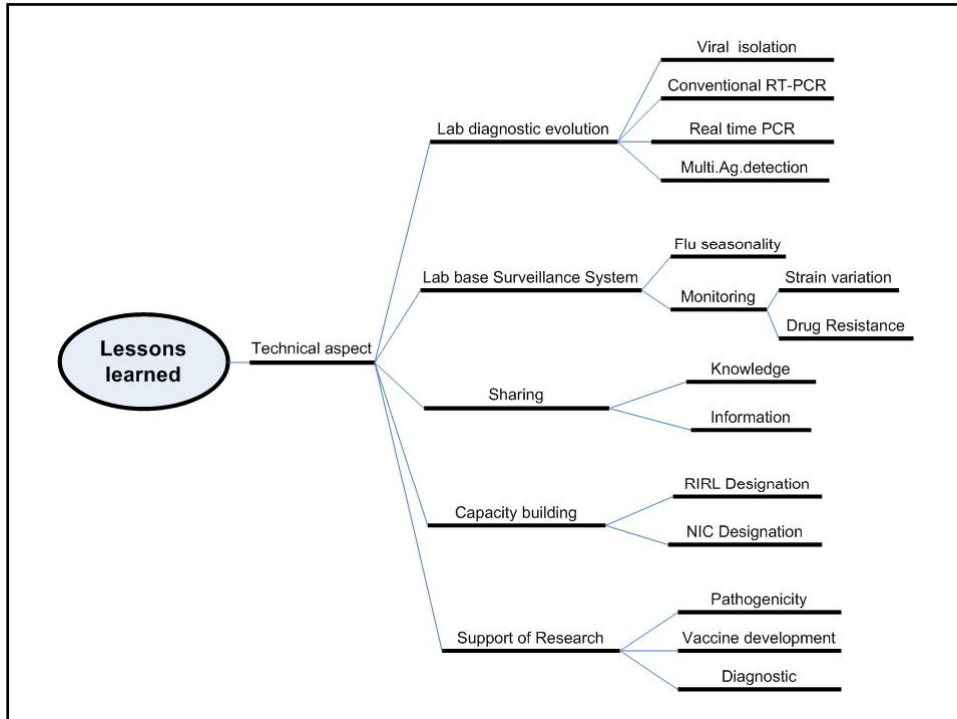
Collaborative meeting Thailand-Cambodia




First Regional Meeting on ASEAN Plus Three Partnership Laboratories, 14-15 Sep 2009

45
45

Capacity Building



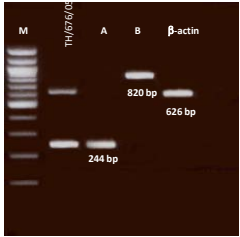
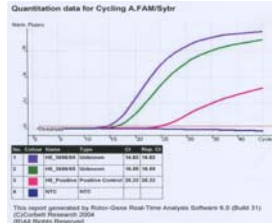
Strengthen lab. Capacity Thai NIC, DMSc Laboratory network



★ Location of 13 regional Medical Science Center

H5N1 detect

RT-PCR real time RT-PCR

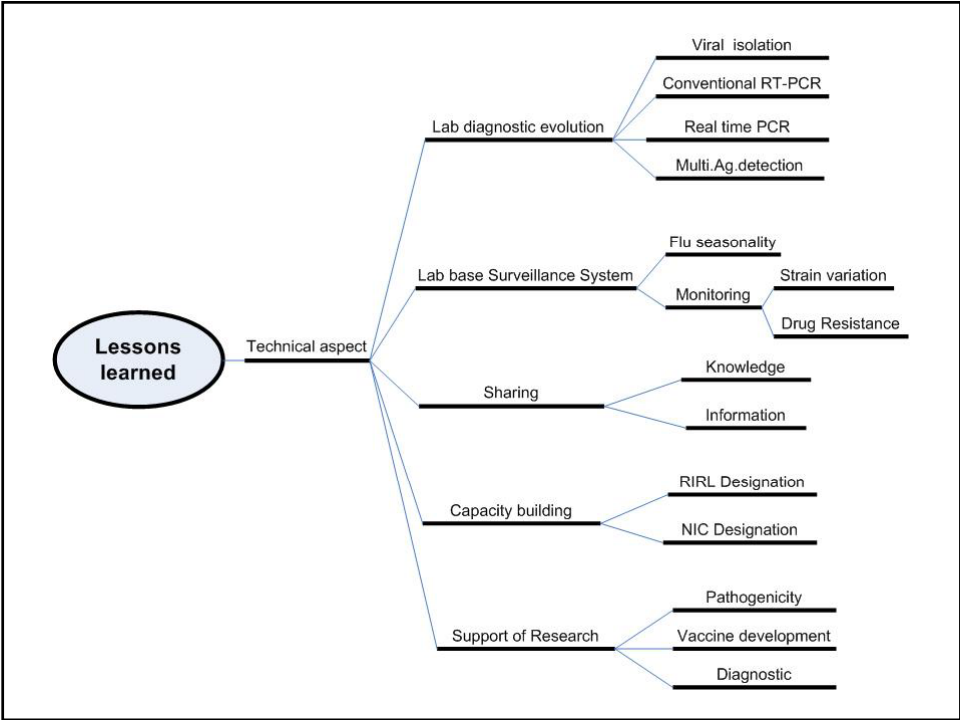



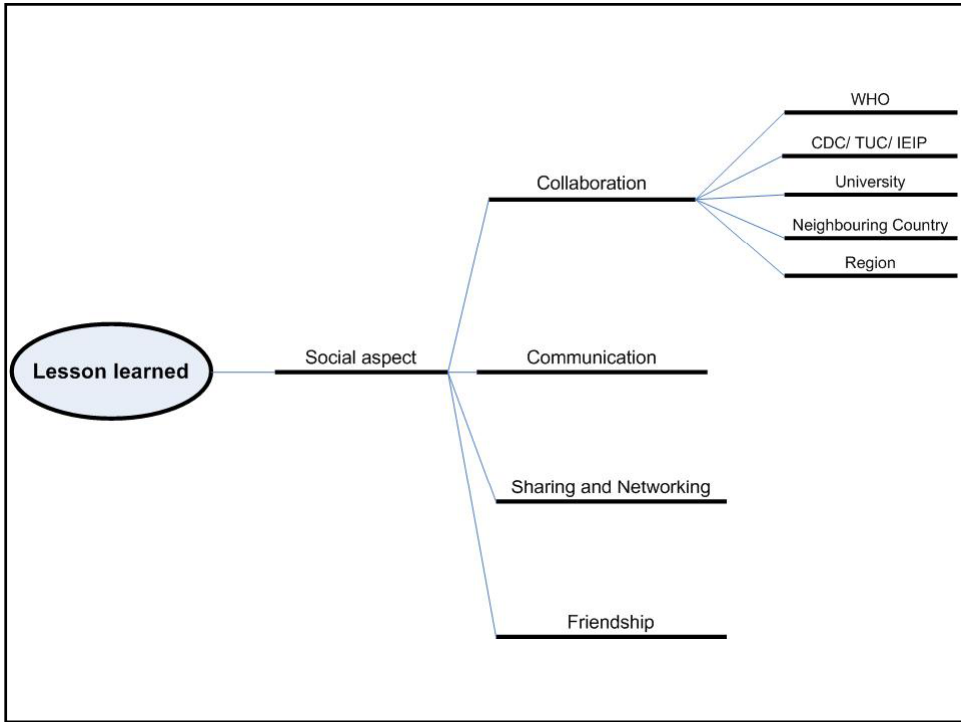
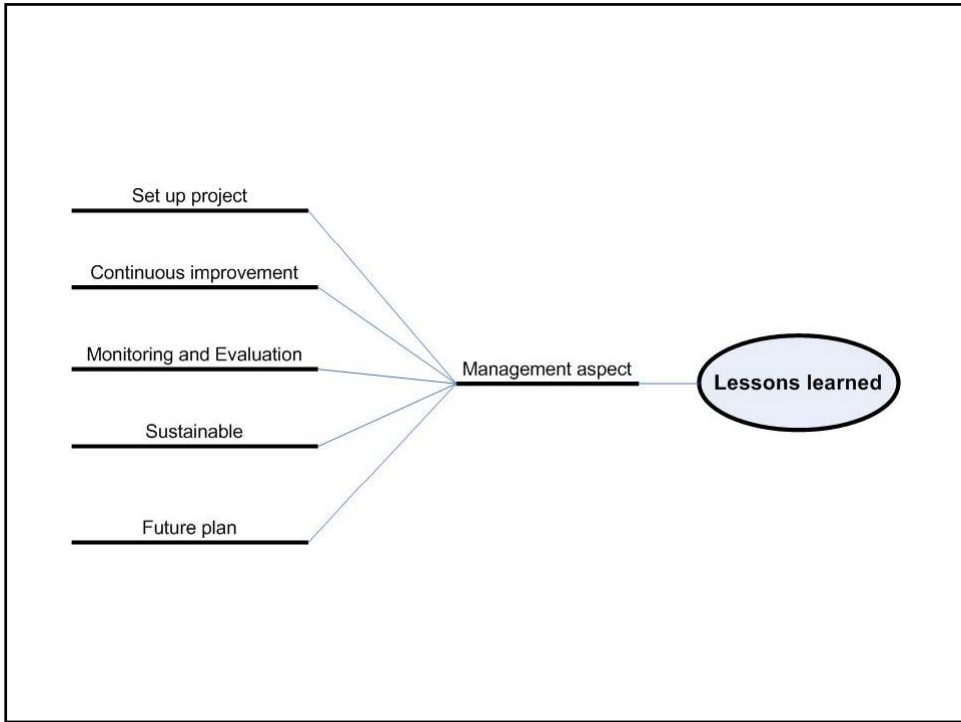
49

The Accreditation of National Health Laboratory as National Influenza Centre, Myanmar
26 February 2008



Support of Research







K. supawat, Thai NIH



55



K. supawat, Thai NIH



56

